

# Product **Blueprint**



**Altitude MPP**



**Manpower  
Planning  
System**

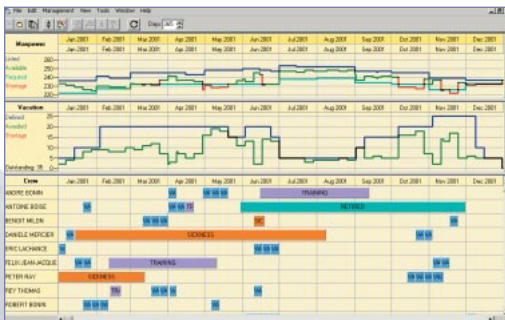


In today's highly competitive marketplace, airlines of all sizes are faced with significant challenges to continuously improve their operational efficiency, while reducing costs. With increasingly large and complex workforces, airlines have the difficult task of establishing and maintaining staffing requirements, managing crewmember career progression, and effectively allocating training and vacation awards. To add to the strain, many factors must be considered when implementing long-term strategies, as countless repercussions will follow any staff or event modification.

With manpower requirements dynamically integrated within a single view, planners can easily understand and strategically plan activities.

## Manpower Planning Requirements At-A-Glance

The *Altitude Manpower Planning (MPP)* system will empower your airline by providing the tools to strategically plan optimal and cost-effective, qualified and properly trained crew manpower levels – required for the efficient operation of a projected fleet schedule plan. By seamlessly managing short-term and long-term planning requirements for every applicable category of crewmember, *Altitude MPP* provides the planner with **enhanced manpower planning decision-making capabilities**, while simultaneously enhancing the airline's core competencies. *Altitude MPP's* "what-if" capabilities can be used to evaluate the impact of making changes to your fleet, opening or closing bases, changes in training capacity, use of company-internal or external facilities, contract negotiations, vacation periods and a host of other possibilities.



Planners can instantly obtain all necessary information at-a-glance, which would otherwise take days to compile from all the various departments. With a dynamic and integrated understanding of vacations, pre-assigned crew activities and crewmember availabilities several months at a time, all contained in one screen, *Altitude MPP* delivers **ease-of-use, speed and improved forecasting capabilities**.

In essence, *Altitude MPP* becomes your "optimized window on the future" that allows you to accurately forecast future events.

## Efficiency: A Cost Control Device

With complex staffing issues and continuous planning modifications, airlines require cost-effective tools that efficiently address the entire manpower planning scope. By seamlessly managing all manpower planning requirements, *Altitude MPP* enables planners to determine exact staffing levels, taking into account the time at which transitions and associated training are best performed, pay rules and the actual training capacity.

Through an **optimal resource allocation process**, *Altitude MPP* can quickly deliver a significant return on investment and consistent cost savings that serve to enhance your planning and forecasting capabilities, and virtually eliminates unforeseen manpower shortages.

## An Interactive Solution for All Crewmembers

AD OPT's interactive solution enables crewmembers to participate in the scheduling process. Crewmembers can submit their bids for transition between categories, and their preferred training dates, giving them more control over their vacation periods and subsequently increasing crewmember satisfaction.



Delivers an "optimized window on the future"

## Key Components for Optimal Efficiency

01

### Solver Panel

Used by the planner to interact with the solvers, the Solver Panel allows the planner to launch each solver separately or together, save generated solutions and view progress status when an optimization runs.

02

### Crew Interface

The Crew Interface is used by crewmembers to submit their equipment bids and vacation bids, as well as to access published information. When combined with **Altitude PBS**, this interface becomes a crewmember's "one-stop-shop" for bidding and information.

03

### Equipment Bid Award Solver

The Equipment Bid Award Solver, used when an automatic equipment bid award is required, features a global approach in that it considers the entire seniority list at once, for North American practices and prioritizes equity, for European solutions. Its objective is to fill the crew position postings according to the applicable rules.

04

### Training Requirements Solver

The Training Requirements Solver is an optimizer used to automatically generate the most-effective manpower training requirements plan. It consists of the ideal timeframe for training the crew to efficiently meet the projected plan based on the actual training capacity. By optimizing every aspect related to the planning of the training function, airlines gain a substantial return on their investment.

05

### Vacation Award Solver

The Vacation Award Solver is used to automatically generate the vacation award (normally awarded on a yearly basis) and support monthly re-bids by automatically assigning vacations to crewmembers based on vacation availability, corporate rules and crewmember choices.

## *Altitude* Suite of Products

The **Altitude Manpower Planning (MPP)** system is the latest addition to the **Altitude** suite of crew planning, optimization and management solutions for the airline industry. With some of the most recognizable clients in the world, **Altitude** provides customized crew management solutions for small, large and/or complex airline organizations, enabling them to enhance their planning capabilities, control operational costs and significantly improve employee quality of life by giving crewmembers more control over their schedules.

Through innovative thinking, progressive research and development in optimization technology and a thorough understanding of the airline industry, **Altitude** has set the standard in crew management solutions.

Copyright © 2002 AD OPT Technologies Inc. All rights reserved.



As the world's leading workforce planning solutions provider, AD OPT Technologies develops software solutions that serve to improve employee quality of life, while enabling their organizations to improve their operations management.

**AD OPT Technologies Inc.**  
3535 Queen Mary, suite 650  
Montreal, Quebec, Canada  
H3V 1H8  
Tel.: 1-514-345-0580  
Fax: 1-514-345-0422

info@ad-opt.com  
www.ad-opt.com

AD OPT and *Altitude* are registered trademarks of AD OPT Technologies Inc. All other company and product names may be trademarks of their respective owners. The information contained herein is subject to change without notice.

ALT-PB-MPP